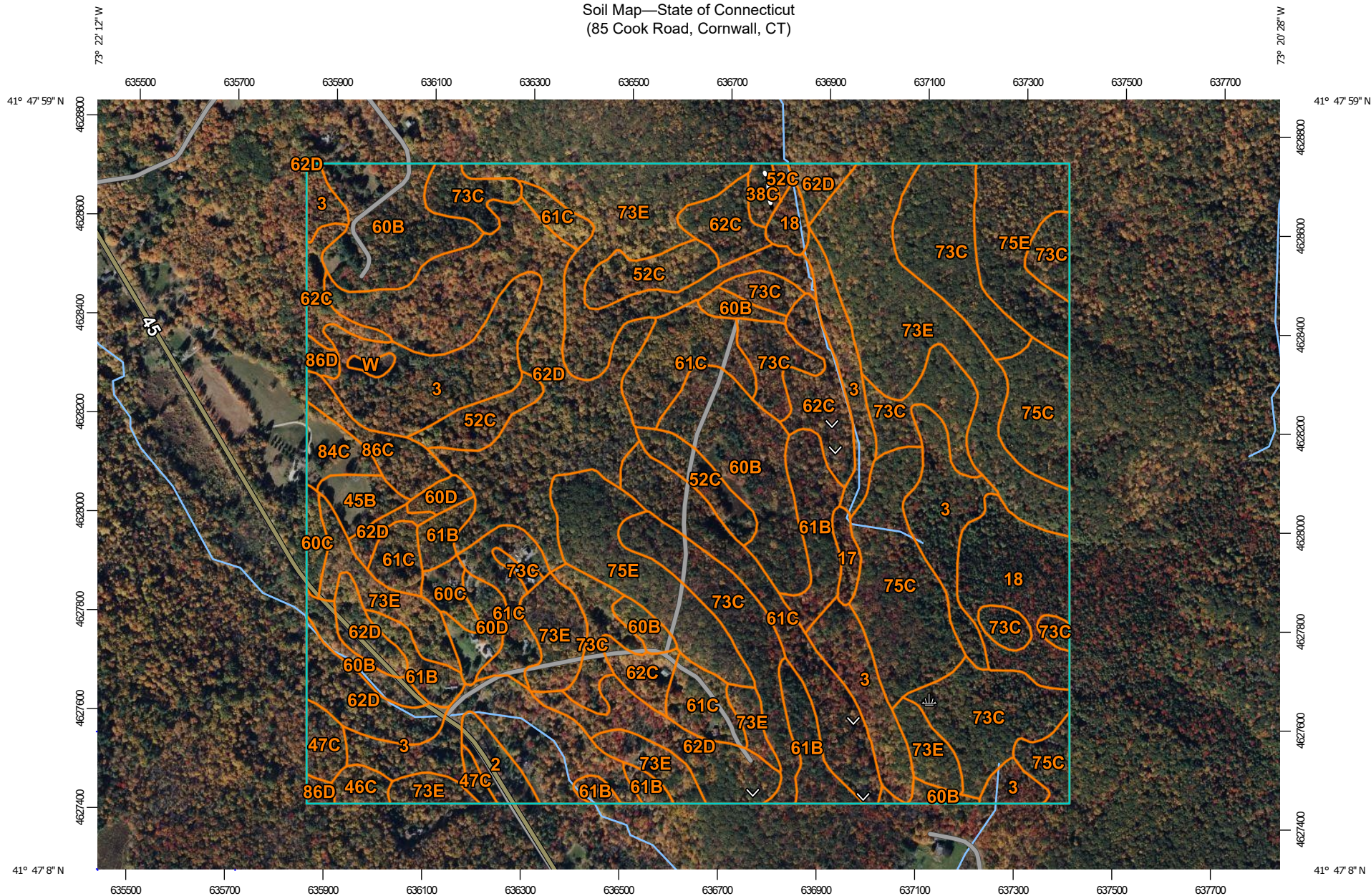
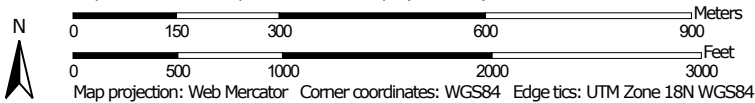


Soil Map—State of Connecticut  
(85 Cook Road, Cornwall, CT)



Map Scale: 1:11,000 if printed on A landscape (11" x 8.5") sheet.



Natural Resources  
Conservation Service

Web Soil Survey  
National Cooperative Soil Survey

1/5/2023  
Page 1 of 4




## MAP LEGEND

### Area of Interest (AOI)

 Area of Interest (AOI)

### Soils

 Soil Map Unit Polygons

 Soil Map Unit Lines

 Soil Map Unit Points

### Special Point Features



Blowout



Borrow Pit



Clay Spot



Closed Depression



Gravel Pit



Gravelly Spot



Landfill



Lava Flow



Marsh or swamp



Mine or Quarry



Miscellaneous Water



Perennial Water



Rock Outcrop



Saline Spot



Sandy Spot



Severely Eroded Spot



Sinkhole



Slide or Slip



Sodic Spot



Spoil Area



Stony Spot



Very Stony Spot



Wet Spot



Other



Special Line Features

### Water Features



Streams and Canals

### Transportation



Rails



Interstate Highways



US Routes



Major Roads



Local Roads

### Background



Aerial Photography

## MAP INFORMATION

The soil surveys that comprise your AOI were mapped at 1:12,000.

Please rely on the bar scale on each map sheet for map measurements.

Source of Map: Natural Resources Conservation Service

Web Soil Survey URL:

Coordinate System: Web Mercator (EPSG:3857)

Maps from the Web Soil Survey are based on the Web Mercator projection, which preserves direction and shape but distorts distance and area. A projection that preserves area, such as the Albers equal-area conic projection, should be used if more accurate calculations of distance or area are required.

This product is generated from the USDA-NRCS certified data as of the version date(s) listed below.

Soil Survey Area: State of Connecticut

Survey Area Data: Version 22, Sep 12, 2022

Soil map units are labeled (as space allows) for map scales 1:50,000 or larger.

Date(s) aerial images were photographed: Oct 8, 2020—Oct 14, 2020

The orthophoto or other base map on which the soil lines were compiled and digitized probably differs from the background imagery displayed on these maps. As a result, some minor shifting of map unit boundaries may be evident.

## Map Unit Legend

Map Unit Symbol	Map Unit Name	Acres in AOI	Percent of AOI
2	Ridgebury fine sandy loam, 0 to 3 percent slopes	3.3	0.7%
3	Ridgebury, Leicester, and Whitman soils, 0 to 8 percent slopes, extremely stony	58.5	11.8%
17	Timakwa and Natchaug soils, 0 to 2 percent slopes	1.7	0.4%
18	Catden and Freetown soils, 0 to 2 percent slopes	15.9	3.2%
38C	Hinckley loamy sand, 3 to 15 percent slopes	1.6	0.3%
45B	Woodbridge fine sandy loam, 3 to 8 percent slopes	3.5	0.7%
46C	Woodbridge fine sandy loam, 8 to 15 percent slopes, very stony	1.9	0.4%
47C	Woodbridge fine sandy loam, 3 to 15 percent slopes, extremely stony	3.5	0.7%
52C	Sutton fine sandy loam, 2 to 15 percent slopes, extremely stony	14.3	2.9%
60B	Canton and Charlton fine sandy loams, 3 to 8 percent slopes	36.5	7.3%
60C	Canton and Charlton fine sandy loams, 8 to 15 percent slopes	4.2	0.8%
60D	Canton and Charlton soils, 15 to 25 percent slopes	5.3	1.1%
61B	Canton and Charlton fine sandy loams, 0 to 8 percent slopes, very stony	19.1	3.9%
61C	Canton and Charlton fine sandy loams, 8 to 15 percent slopes, very stony	40.1	8.1%
62C	Canton and Charlton fine sandy loams, 3 to 15 percent slopes, extremely stony	18.0	3.6%
62D	Canton and Charlton fine sandy loams, 15 to 35 percent slopes, extremely stony	64.2	12.9%
73C	Charlton-Chatfield complex, 0 to 15 percent slopes, very rocky	65.1	13.1%

Map Unit Symbol	Map Unit Name	Acres in AOI	Percent of AOI
73E	Charlton-Chatfield complex, 15 to 45 percent slopes, very rocky	73.9	14.9%
75C	Hollis-Chatfield-Rock outcrop complex, 3 to 15 percent slopes	28.4	5.7%
75E	Hollis-Chatfield-Rock outcrop complex, 15 to 45 percent slopes	26.8	5.4%
84C	Paxton and Montauk fine sandy loams, 8 to 15 percent slopes	3.6	0.7%
86C	Paxton and Montauk fine sandy loams, 3 to 15 percent slopes, extremely stony	5.0	1.0%
86D	Paxton and Montauk fine sandy loams, 15 to 35 percent slopes, extremely stony	1.7	0.3%
W	Water	0.7	0.1%
<b>Totals for Area of Interest</b>		<b>496.8</b>	<b>100.0%</b>